



BOULDIN & LAWSON, LLC

P.O. Box 7177
 McMinnville, TN 37111
 Phone: 931-668-4090
 Toll Free : 800-443-6398
 Fax: 931-668-3209

E-mail:
 sales@bouldinlawson.com

www.bouldinlawson.com



Designed to blend all media types



Chemical hoppers are dependable and accurate



A proud member of the
BouldinCorp™ Family

MixMaker™

Custom Mixing Lines



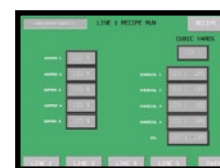
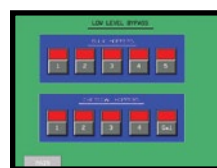
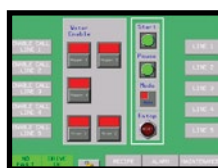
MixMaker systems provide a continuous supply of media that is evenly mixed with minimal damage to particle integrity. You can specify combinations of various sized hoppers, 2.6 yd, 4 yd, 10 yd and 15 yd. Stainless steel chemical hoppers deliver small quantities of fertilizers and trace elements dependably and accurately. Computer Controlled Systems offer the benefit of storing and changing recipes, integrating with multiple machines and automatically supplying different mixes to different machines at the same time.

Specifications and Options

Hopper Options	2.6, 4, 10, or 15 cubic yard galvanized feed hoppers each will provide precise delivery of material to meet your specification
Features	Stainless steel chemical hoppers
Soil Mixing System Operations Options	On/Off automatically by production machinery Run continuously to stockpile mix Bulk-load into trucks

Our custom mix lines are modular in design, allowing you to add hoppers or change size or type as and when you need to expand your system. This has been further simplified with our plug-and-play control "node" system, doing away with the complex control wiring typically making expansion/changes expensive.

The latest Touchscreen Control panels allow the operator to specify recipes, location of mixes and system operation along with giving feedback on raw and total product used for inventory control. This can also be linked to plant lines for instant and total production rates per line per day. Additionally, this information can be fed directly to your smart phone or other media device giving production managers instant data on system operation and live time production flow.



**Computer controlled systems
 and variable speed packages**



Made in the USA